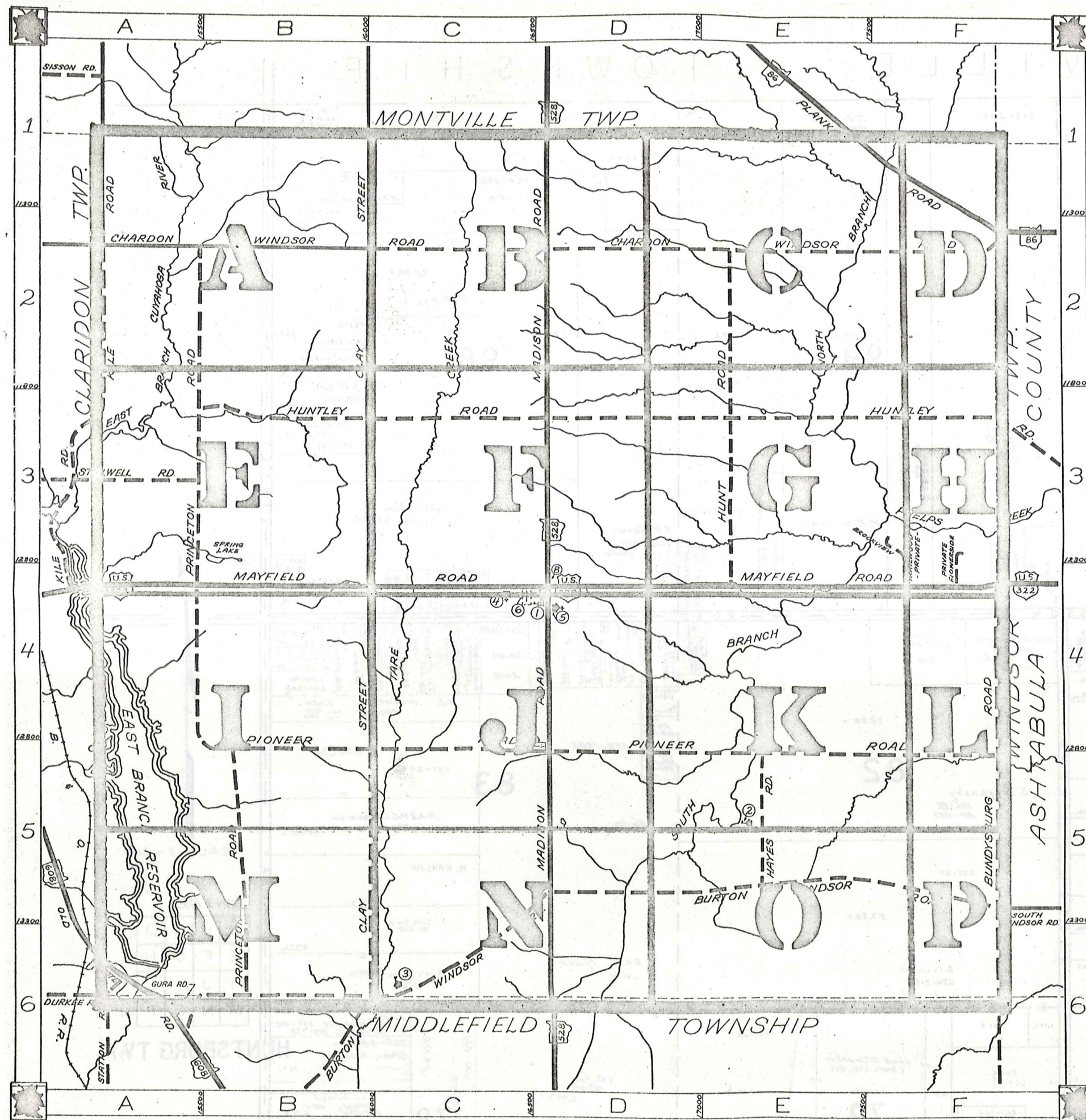


# ROAD INDEX



A	J	S	STILLWELL RD.	A3
B	K	T	BROOKVIEW RD. F3 BUNDYSBURG RD. F4-F6 BURTON WINDSOR RD. C6-F5	AI-AH TRAILWOOD RD. F4
C	L	U	CHARDON WINDSOR RD. A2-F2 CLAY STREET	BI-B6
D	M	V	DURKEE RD.	AG-B6 MADISON RD. DI-D6 MAYFIELD RD. AH-F4
E	N	W		
F	O	X	FLOWERSIDE RD.	F4 OLD STATE RD. A6
G	P	Y		
H	Q	Z	HAYES RD. E5 HUNTLEY RD. B3-F3 HUNT RD. E2-E4	

- ① HUNTSBURG ELEM. SCHOOL
- ② AMISH SCHOOL
- ③ AMISH SCHOOL
- ④ HUNTSBURG BAPTIST CH.
- ⑤ HUNTSBURG CONGREGATIONAL CH.
- ⑥ HUNTSBURG CEMETERY
- ⑦ HUNTSBURG CEMETERY
- ⑧ UNITED STATES POST OFFICE
- ⑨
- ⑩

## HUNTSBURG TOWNSHIP

SCALE: 1" = 2000'

ROBERT E. PHILLIPS,  
GEALGA COUNTY ENGINEER

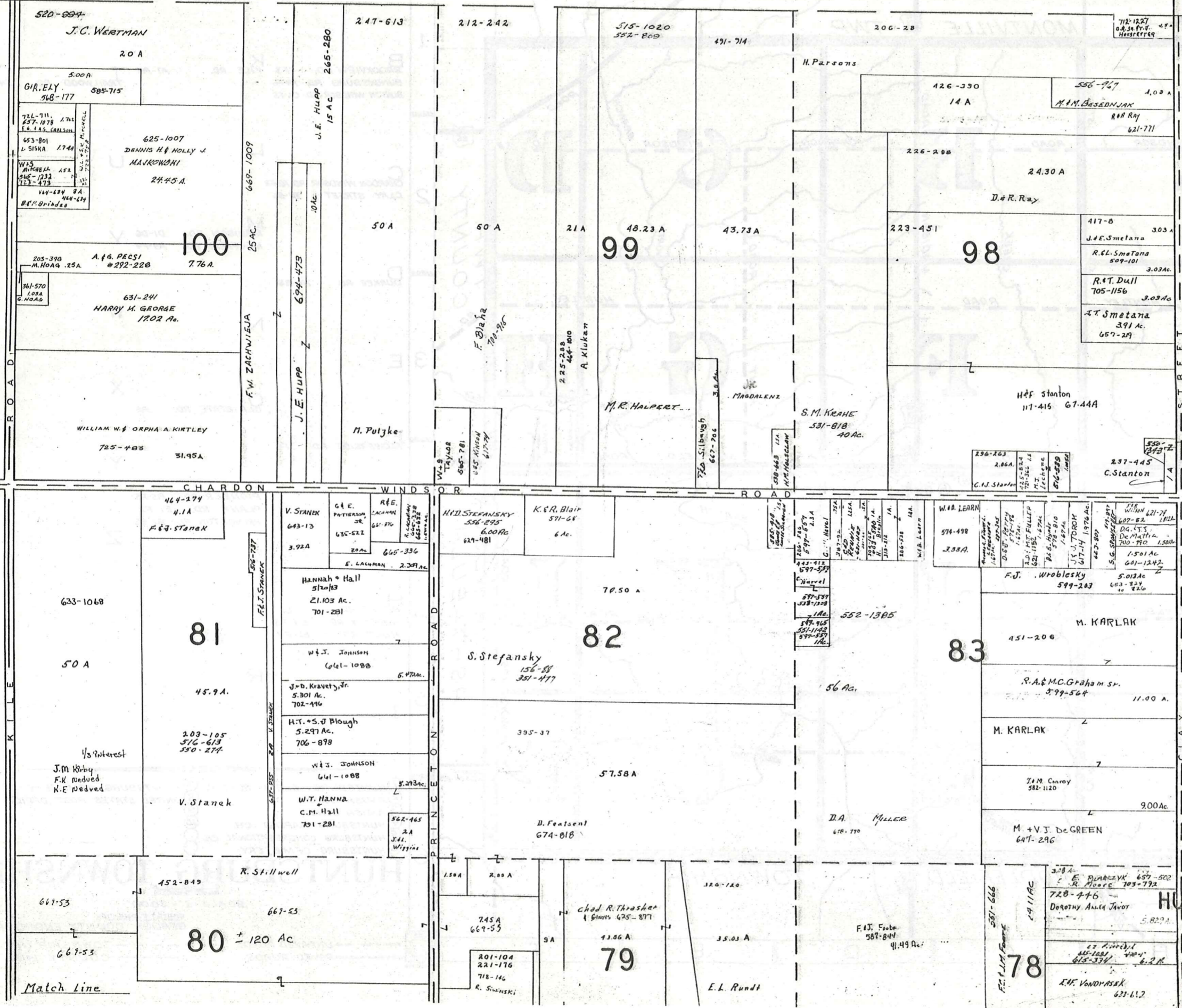
- UNPAVED ROADS
- PAVED ROADS
- TOWNSHIP LINE
- COUNTY LINE



MONTVILLE TOWNSHIP

TOWNSHIP

CLARIDON



SCALE 1 = 300

JAN 1, 1985

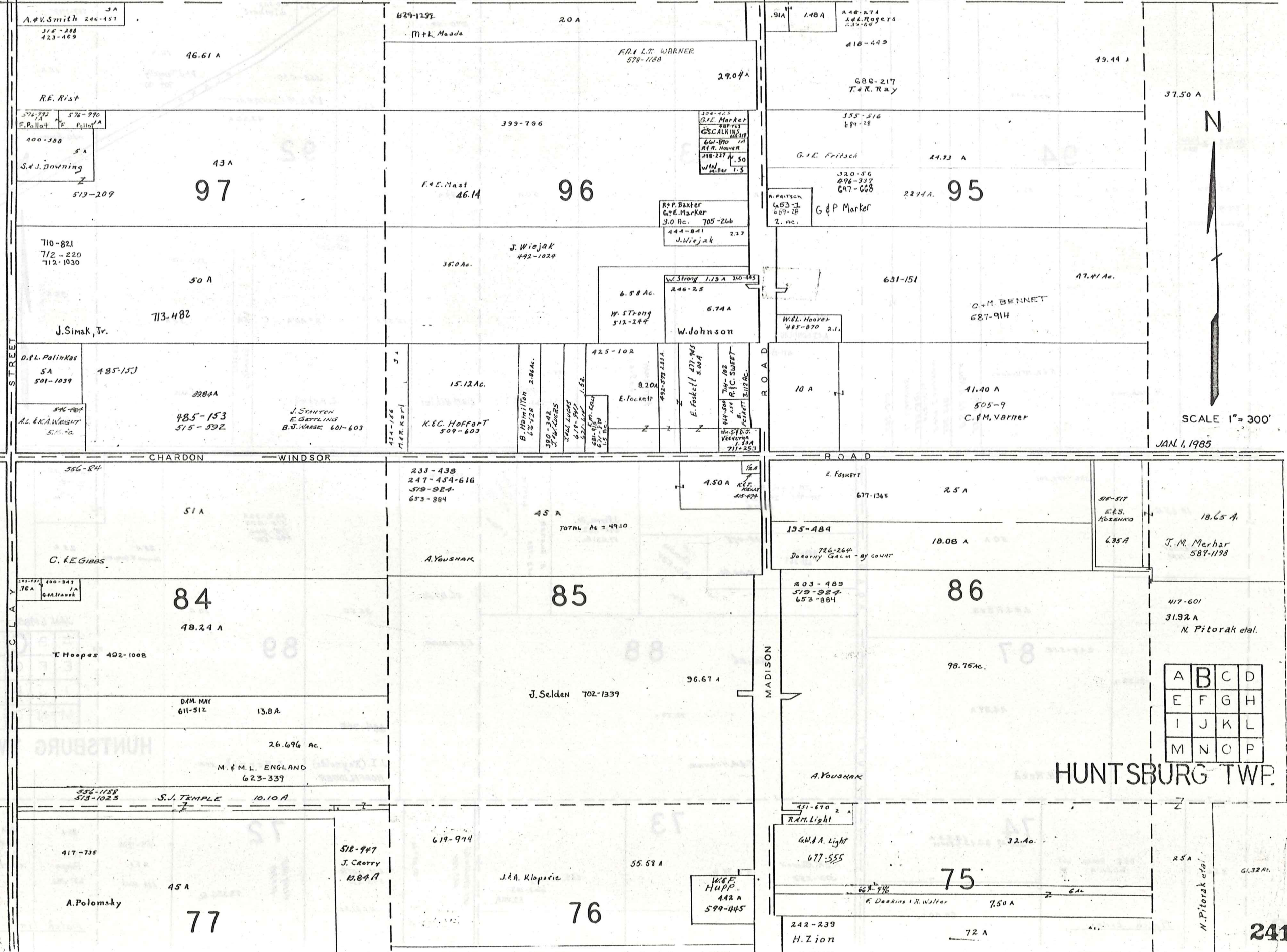
A	B	C	D
E	F	G	H
I	J	K	L
M	N	O	P

HUNTSBURG TWP

Match line

Match Line

MONTVILLE TOWNSHIP



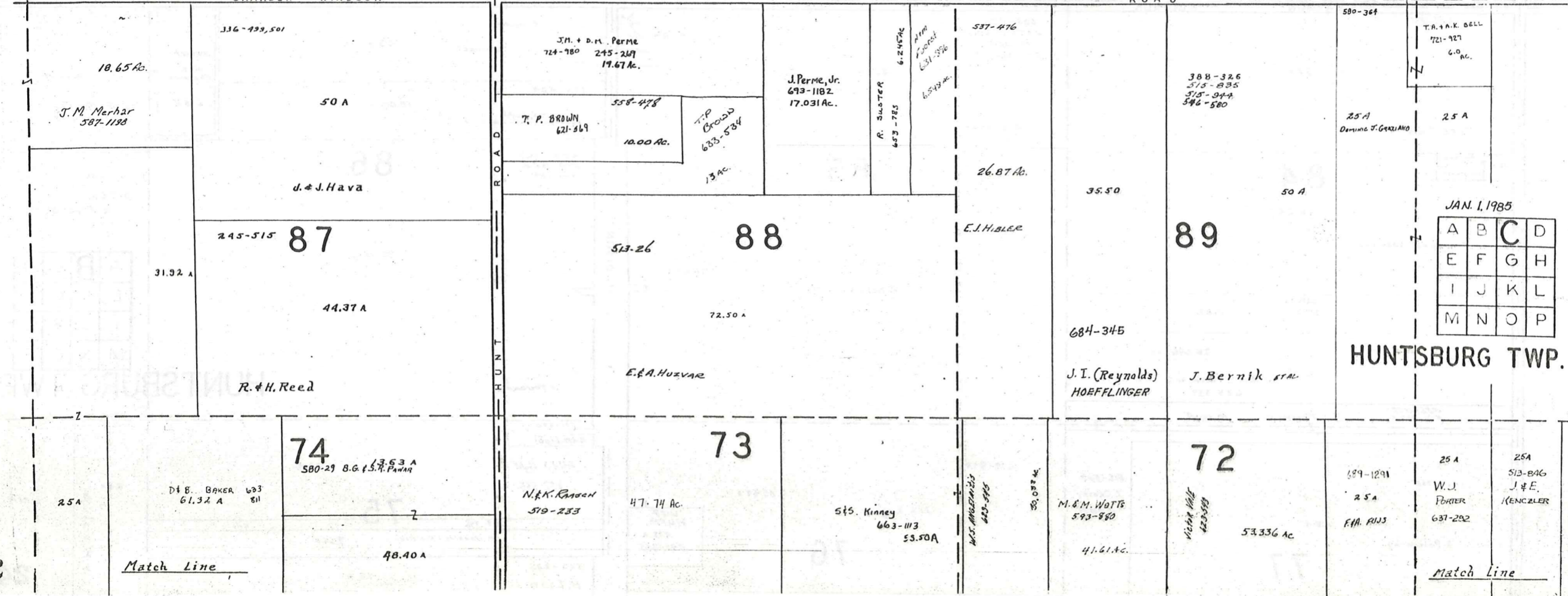
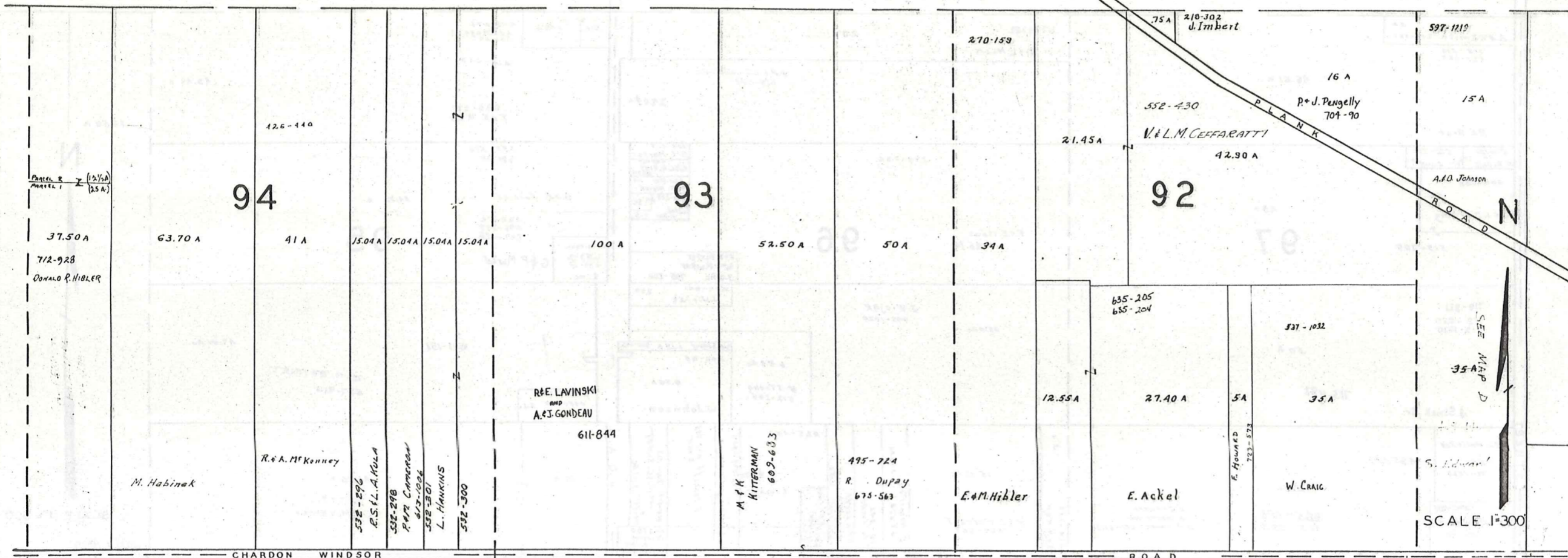
SCALE 1" = 300'

JAN. 1, 1985

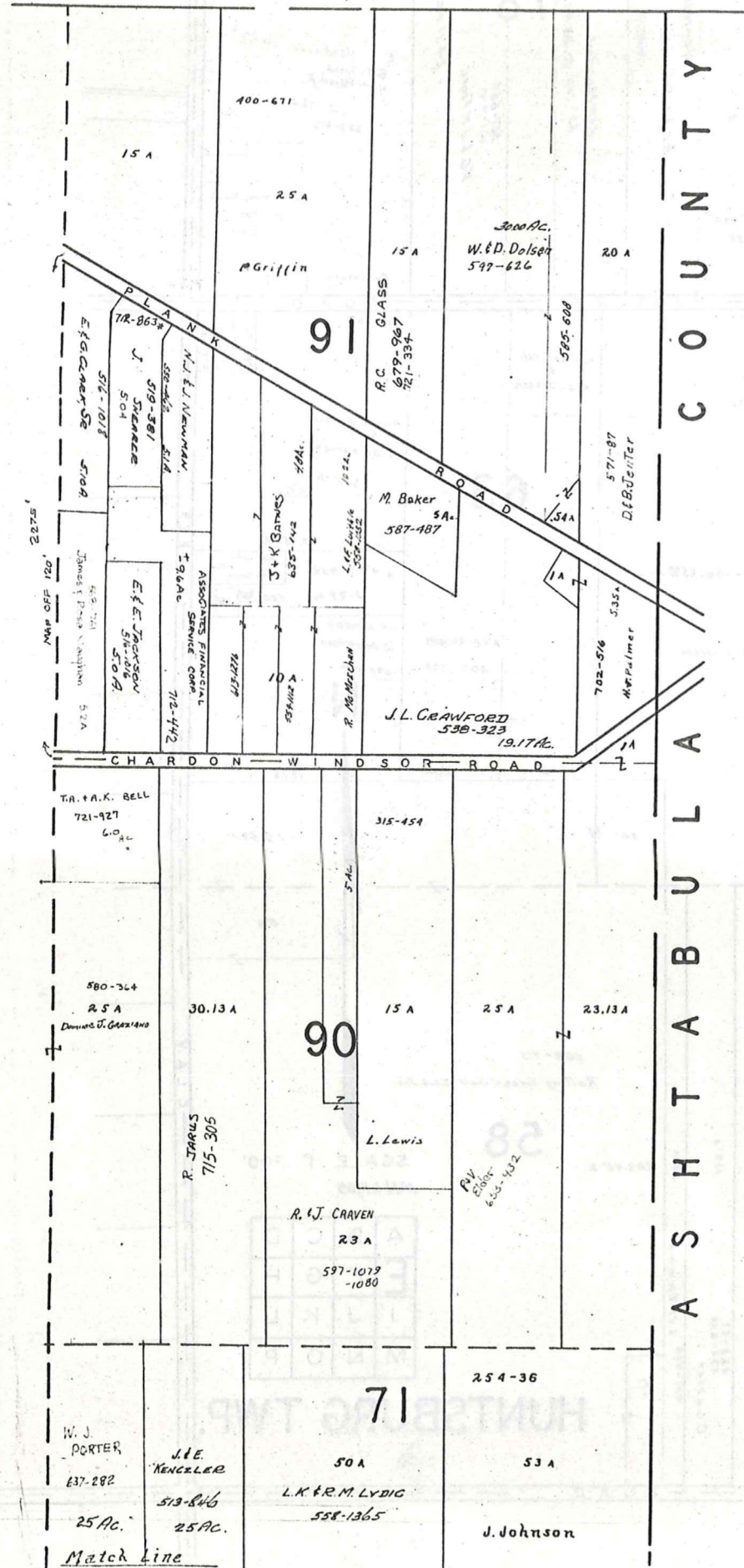
A	B	C	D
E	F	G	H
I	J	K	L
M	N	O	P

HUNTSBURG TWP.

MONTVILLE TOWNSHIP



MONTVILLE TWP.



A S H B U R N C O U N T Y



SCALE 1"=300'

JAN. 1, 1985

A	B	C	D
E	F	G	H
I	J	K	L
M	N	O	P

HUNTSBURG TWP.

Match Line

Match Line

R.F.J. Stillwell

667-53

452-040

80

669-53 ±120 Ac

26.10 A  
508-418  
718-150  
J.C. + M. Polewka et al

R. Stillwell  
667-1067  
1 A

6.25 A

J.C. + M. Polewka  
718-150

508-418

20A  
R. Szwinski  
718-146

508-418

Chad R. Thrasher  
161015 625-827

J. Polewka  
718-144

9.75 A

79

45.86 Ac

35.03 A

E.L. Rundt

582-894

3.14 A  
R.F. Linn Swannick

202-413  
20 A

R.F.M. Bullish  
601-988

18.3956 Ac.

F. & J. Foote  
587-814  
631-813 41.49 Ac

78

552-1081

B.F. & B. Spangberg

10.56 Ac.

610-1081

42-376 10.85 Ac.

587-666

631-813

F.C. & J. M. Foote

24.11 Ac.

E. Vondracek 170-43  
B.J. Jones  
H.M. Hordy  
52.126 Ac  
623-612

R.W. + E.M. Heiss  
717-960  
6.158

Cemetery

452-733

57.75 A

R. Kelsey, Jr.

701-1193

61

426-1006

15.23 A

H. De Long

272-541

23.23 A

H. + E. Adams

E. Toruba

208-517

H. De Long et al.

558-1302

J. Lynch

208-513

P. Bassett

430-343

H. De Long

2 A

2 A

2 A

2 A

2 A

2 A

2 A

2 A

2 A

2 A

2 A

2 A

2 A

2 A

2 A

2 A

2 A

2 A

2 A

2 A

2 A

2 A

2 A

2 A

2 A

2 A

2 A

2 A

2 A

2 A

2 A

2 A

2 A

2 A

2 A

2 A

2 A

2 A

2 A

21A

J.C. + M. Polewka et al.

508-418

62

7.65 A

45 44 43 42 41 40 39 38 37 36 35 34 33 32 31 30 29 28 27 26 25 24 23 22 21 20 19 18 17 16 15 14 13 12 11 10 9 8 7 6 5 4 3 2 1

WINDMILL POINT ROAD

WINDMILL POINT EST

WINDMILL POINT EST

WINDMILL POINT EST

WINDMILL POINT EST

WINDMILL POINT EST

WINDMILL POINT EST

WINDMILL POINT EST

WINDMILL POINT EST

WINDMILL POINT EST

WINDMILL POINT EST

WINDMILL POINT EST

WINDMILL POINT EST

WINDMILL POINT EST

WINDMILL POINT EST

WINDMILL POINT EST

WINDMILL POINT EST

WINDMILL POINT EST

WINDMILL POINT EST

WINDMILL POINT EST

WINDMILL POINT EST

WINDMILL POINT EST

WINDMILL POINT EST

WINDMILL POINT EST

WINDMILL POINT EST

WINDMILL POINT EST

WINDMILL POINT EST

WINDMILL POINT EST

WINDMILL POINT EST

WINDMILL POINT EST

WINDMILL POINT EST

WINDMILL POINT EST

WINDMILL POINT EST

WINDMILL POINT EST

WINDMILL POINT EST

WINDMILL POINT EST

WINDMILL POINT EST

WINDMILL POINT EST

WINDMILL POINT EST

WINDMILL POINT EST

582-261

7.65 A

7.65 A

7.65 A

7.65 A

7.65 A

7.65 A

7.65 A

7.65 A

7.65 A

7.65 A

7.65 A

7.65 A

7.65 A

7.65 A

7.65 A

7.65 A

7.65 A

7.65 A

7.65 A

7.65 A

7.65 A

7.65 A

7.65 A

7.65 A

7.65 A

7.65 A

7.65 A

7.65 A

7.65 A

7.65 A

7.65 A

7.65 A

7.65 A

7.65 A

7.65 A

7.65 A

7.65 A

7.65 A

7.65 A

7.65 A

7.65 A

7.65 A

7.65 A

7.65 A

7.65 A

7.65 A

46.5398 Ac.

MARILYN ANDERSON

23.75 A

23.75 A

23.75 A

23.75 A

23.75 A

23.75 A

23.75 A

23.75 A

23.75 A

23.75 A

23.75 A

23.75 A

23.75 A

23.75 A

23.75 A

23.75 A

23.75 A

23.75 A

23.75 A

23.75 A

23.75 A

23.75 A

23.75 A

23.75 A

23.75 A

23.75 A

23.75 A

23.75 A

23.75 A

23.75 A

23.75 A

23.75 A

23.75 A

23.75 A

23.75 A

23.75 A

23.75 A

23.75 A

63

A.E. RHODES  
607-177

607-177

607-177

607-177

607-177

607-177

607-177

607-177

607-177

607-177

607-177

607-177

607-177

607-177

607-177

607-177

607-177

607-177

607-177

607-177

607-177

607-177

607-177

607-177

607-177

607-177

607-177

607-177

582-263

N.R. KOTHEBA  
M. ANDERSON  
670-1070

670-1070

670-1070

670-1070

670-1070

670-1070

670-1070

670-1070

670-1070

670-1070

670-1070

670-1070

670-1070

670-1070

670-1070

670-1070

670-1070

670-1070

670-1070

670-1070

670-1070

670-1070

670-1070

670-1070

670-1070

670-1070

670-1070

670-1070

670-1070

670-1070

670-1070

670-1070

670-1070

670-1070

670-1070

670-1070

670-1070

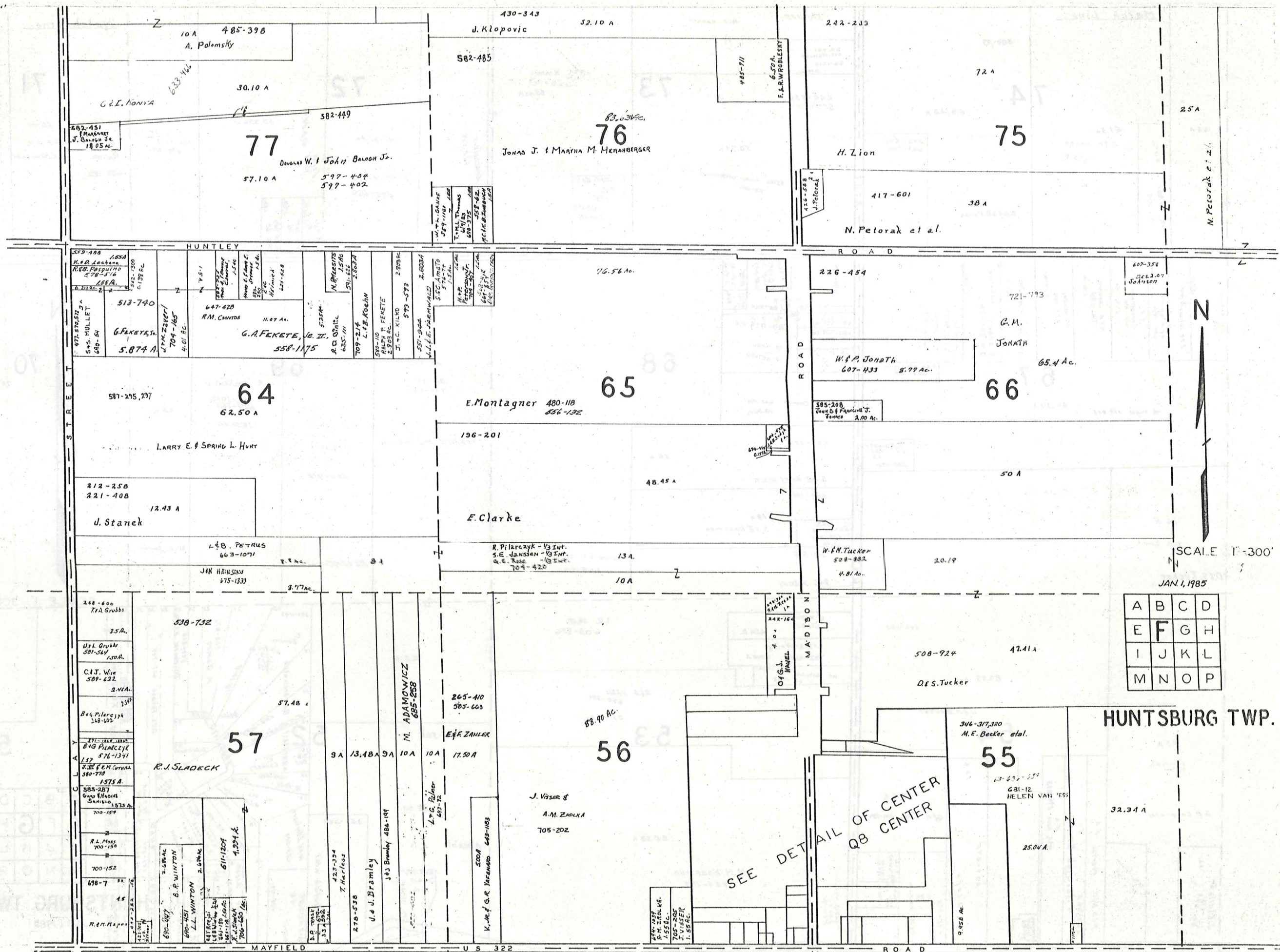
670-1070

670-1070

670-1070

670-1070

670-1070



A	B	C	D
E	F	G	H
I	J	K	L
M	N	O	P

HUNTSBURG TWP.

10 A 485-398  
A. Palemsky  
30.10 A  
582-449  
77  
Domenic W. & John Balogh Jr.  
57.10 A  
597-404  
597-402

430-343 52.10 A  
J. Klopovic  
582-485  
83.63 AC.  
76  
John J. & Martha M. Heranberger

242-233  
72 A  
75  
H. Zion  
417-601 38 A  
N. Petorak et al.

513-740  
64  
62.50 A  
LARRY E & SPRING L. HUNT  
587-295, 297  
212-258  
221-408  
12.43 A  
d. Stanek

76.56 AC.  
65  
E. Montagner 480-118  
856-132  
196-201  
48.45 A  
E. Clarke  
R. Pilarczyk - 1/3 Int.  
S.E. Jansson - 1/3 Int.  
G.E. Rose - 1/3 Int.  
704-420

226-454  
721-193  
G.M. JONATH  
65.4 AC.  
76  
W. & P. JONATH  
607-433 8.77 AC.  
585-208  
J. & P. JONATH  
2.00 AC.

538-732  
57  
57.48 A  
R.J. SLADECK  
268-600  
77 A. Grubbs  
3.5 A.  
W.H. Grubbs  
581-349  
1.50 A.  
C.H. Wie  
589-622  
2.44 A.  
Bog. Pilarczyk  
148-405  
1.51 A.  
Bog. Pilarczyk  
576-1341  
1.52 A.  
R.M. Cernik  
580-770  
1.57 A.  
585-287  
GARY WADSWORTH  
700-159  
R.L. Moss  
700-150  
700-152  
698-7  
R.M. Hapka

265-410  
585-663  
E. & F. ZANLER  
17.50 A  
J. Visser &  
A.M. ZADKA  
705-202  
M. ADAMOWICZ  
685-258  
L.G. Palmer  
697-12  
L. & J. Bramley  
183 Bramley 488-189  
278-538  
J. & J. Bramley  
423-334  
T. Marless  
500  
K.M. G.R. YERGEN  
648-185

508-924  
47.41 A  
D.G.S. TUCKER  
55  
346-317, 320  
M.E. Becker et al.  
25.04 A  
HELEN VAN 'ESS  
681-12

SEE DETAIL OF CENTER  
Q8 CENTER

SCALE 1"=300'  
JAN. 1, 1985

Match Line

Match Line

74

73

72

71

67

68

69

70

54

53

52

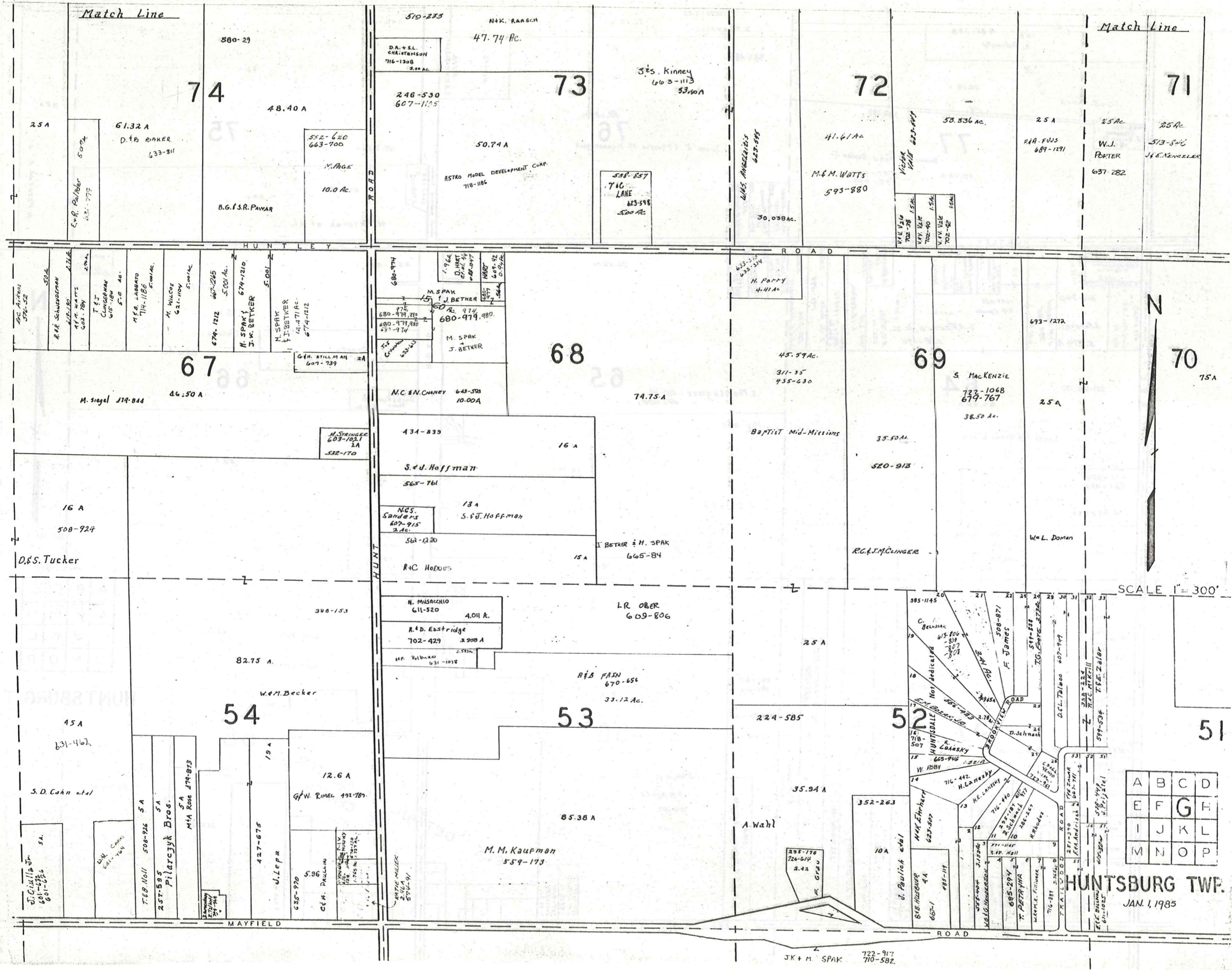
51

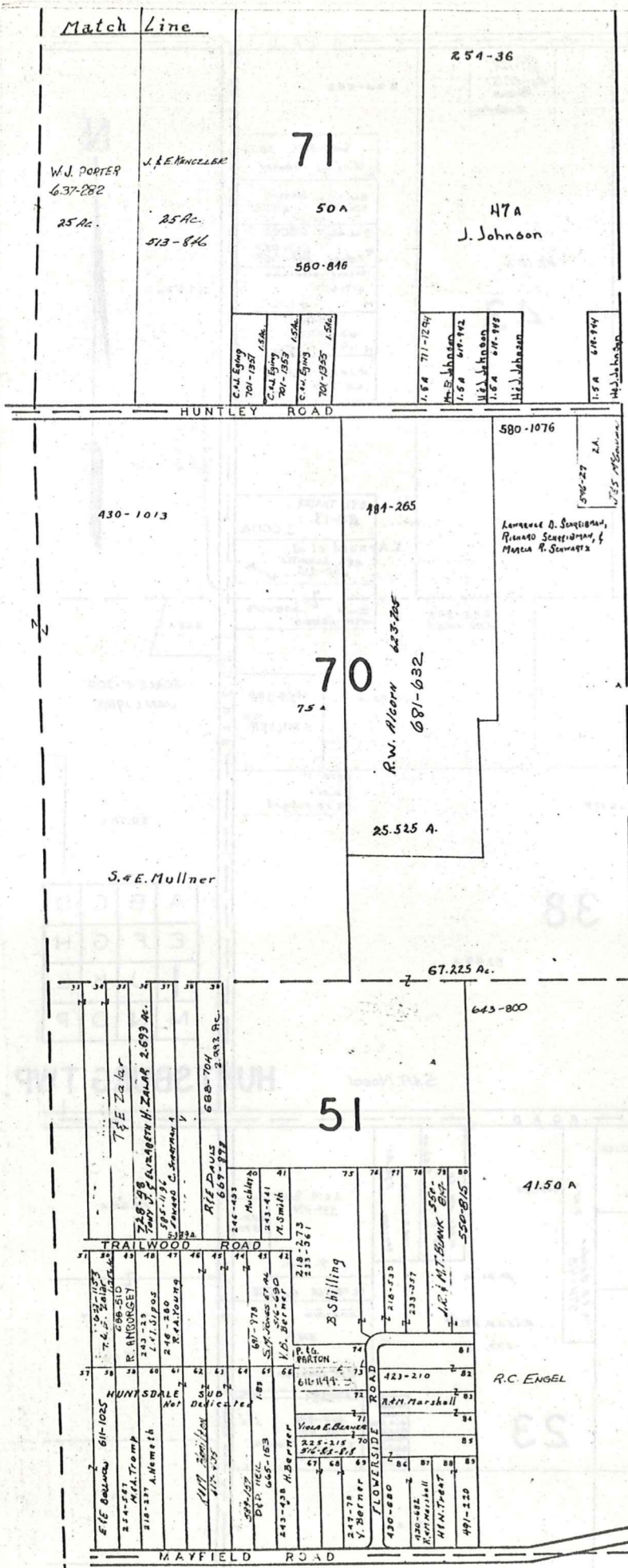


SCALE 1" = 300'

A	B	C	D
E	F	G	H
I	J	K	L
M	N	O	P

HUNTSBURG TWP.  
JAN. 1, 1985





C O U N T Y  
A S H T A B U L A



JAN 1, 1985  
Scale 1" = 300'

A	B	C	D
E	F	G	H
I	J	K	L
M	N	O	P

HUNTSBURG TWP.

CLARIDON TOWNSHIP

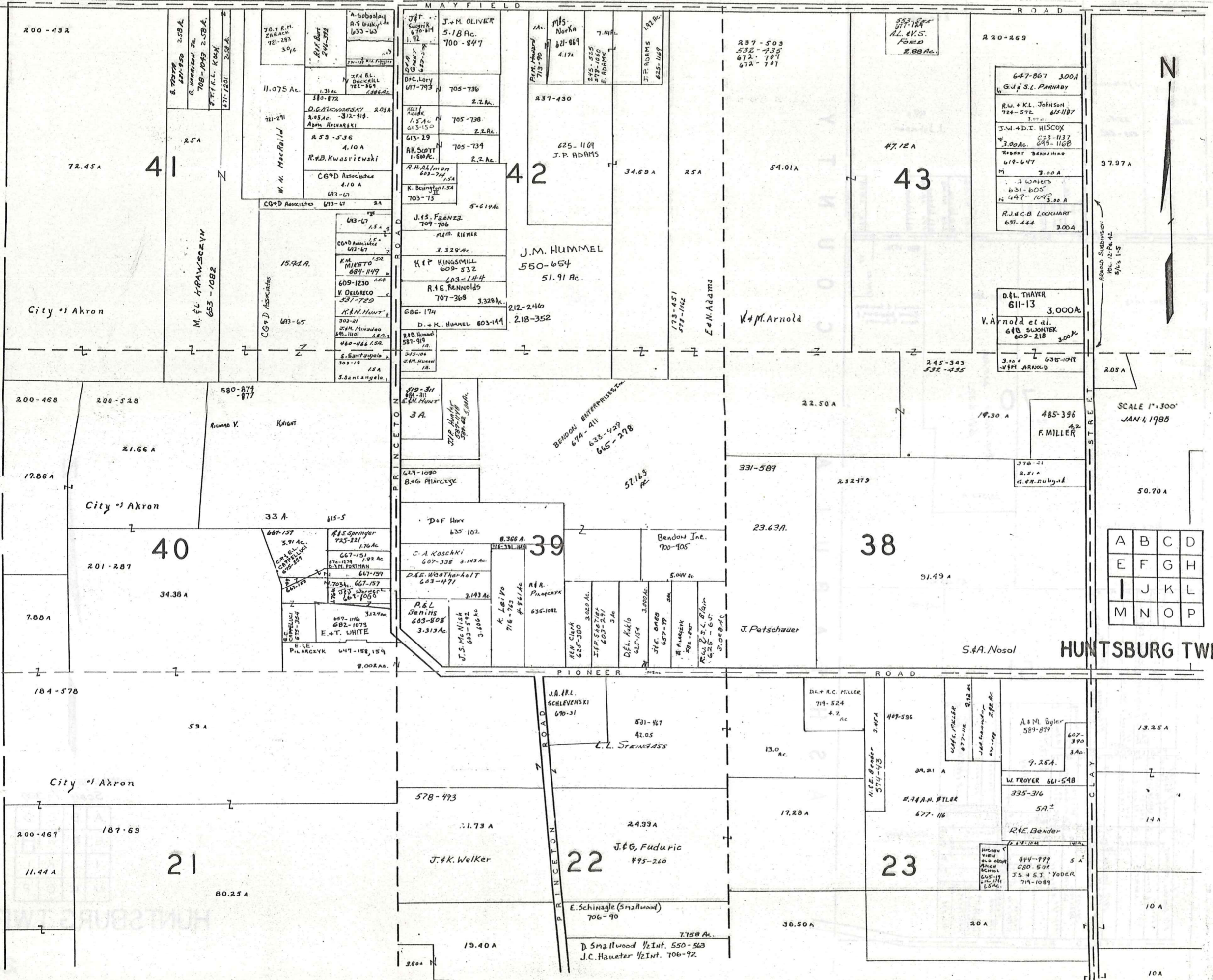
MAYFIELD ROAD



SCALE 1"=300'  
JAN 4, 1985

A	B	C	D
E	F	G	H
I	J	K	L
M	N	O	P

HUNTSBURG TWP.





The Benedictine Order of Cleveland  
509-1031

47  
97 Ac.

48  
Meadowridge Farm  
58.934

49  
152.50 A

36 A

237-222  
K. Byrne  
30.50 A

Meadowridge Farm  
647-177

J.K. + M. SRAK

32.86 A

30.50 A

33  
99 Ac.  
J.J. + E.B. MAST  
599-505

46.15 A

32  
104.63 A

17.21 A

486-734  
10 A  
L.K. BUTTCH

34  
52.19 A  
M.M. MILLER  
665-1252

M.M. MILLER  
665-1252

43 A

5+2-1209

C.W. + DA. DROTAR

5+2-1209

5+2-1209

STEPHEN RUDOWSKI



SCALE 1" = 300'

Match Line

R.L. G.A.  
GWINN  
689-152

33.61 A  
553-403

ELI G. GWINN

17 Ac

27  
49.30 Ac.  
J.I. DETWEILER  
699-127, 129

E.E. + R.F.  
McDONALD  
637-915  
637-1081  
14,077 A

E.E. + R.F.  
McDONALD  
1A-45  
701-45

NR. E.J. BYLER  
680-340

7.5 A

C. TERRY MILLER

28  
73 A

SEE MAP  
O  
5 Ac

SEE MAP  
O  
5 Ac

SEE MAP  
O  
5 Ac

J.I. DETWEILER  
699-127, 129

188-525  
193-39

A. + A. MISTERKA

29  
100 A

210-526

24.50 A

A.E. + M.E.  
Miller  
562-329

C.J. + M.H.  
Detweiler  
5997 Ac.  
701-1278

1B.25  
702-665  
C.J. + M.H.  
Detweiler

JAN. 1, 1985

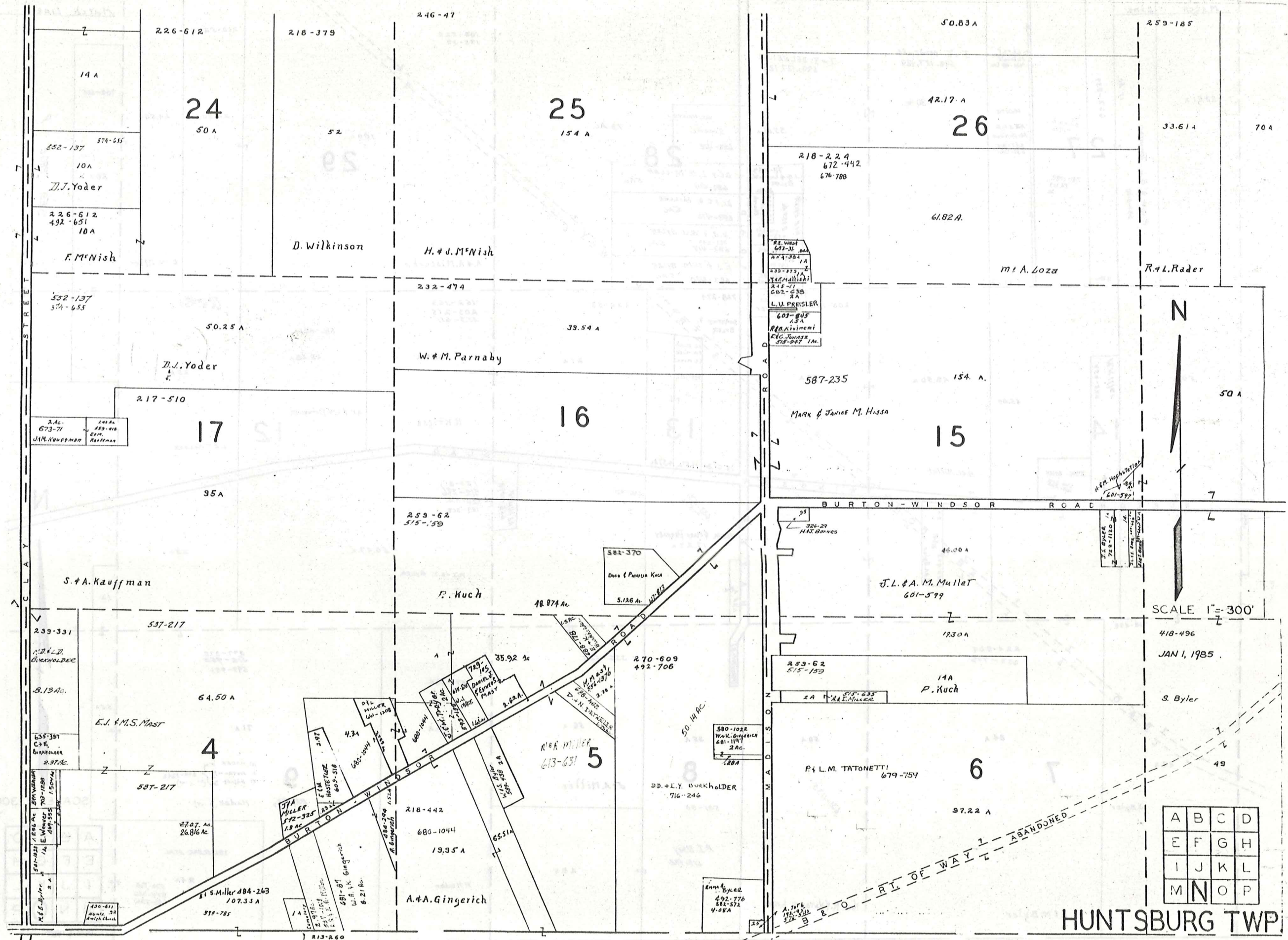
Match Line  
E.M.  
RUMMEL  
621-789

A	B	C	D
E	F	G	H
I	J	K	L
M	N	O	P

HUNTSBURG TWP.







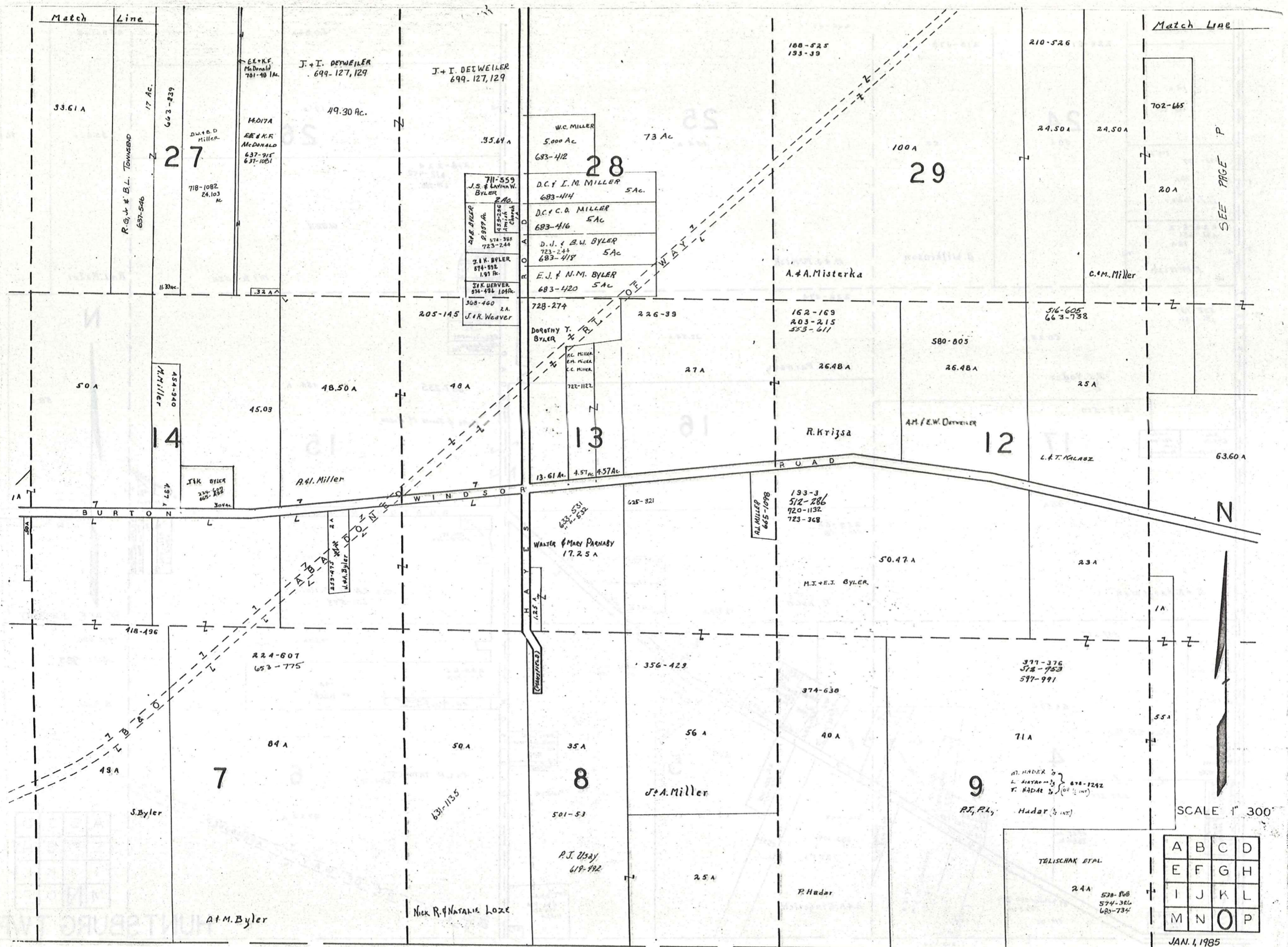
SCALE 1" = 300'

418-496  
JAN 1, 1985

A	B	C	D
E	F	G	H
I	J	K	L
M	N	O	P

HUNTSBURG TWP.

M I D D L E F I E L D T O W N S H I P



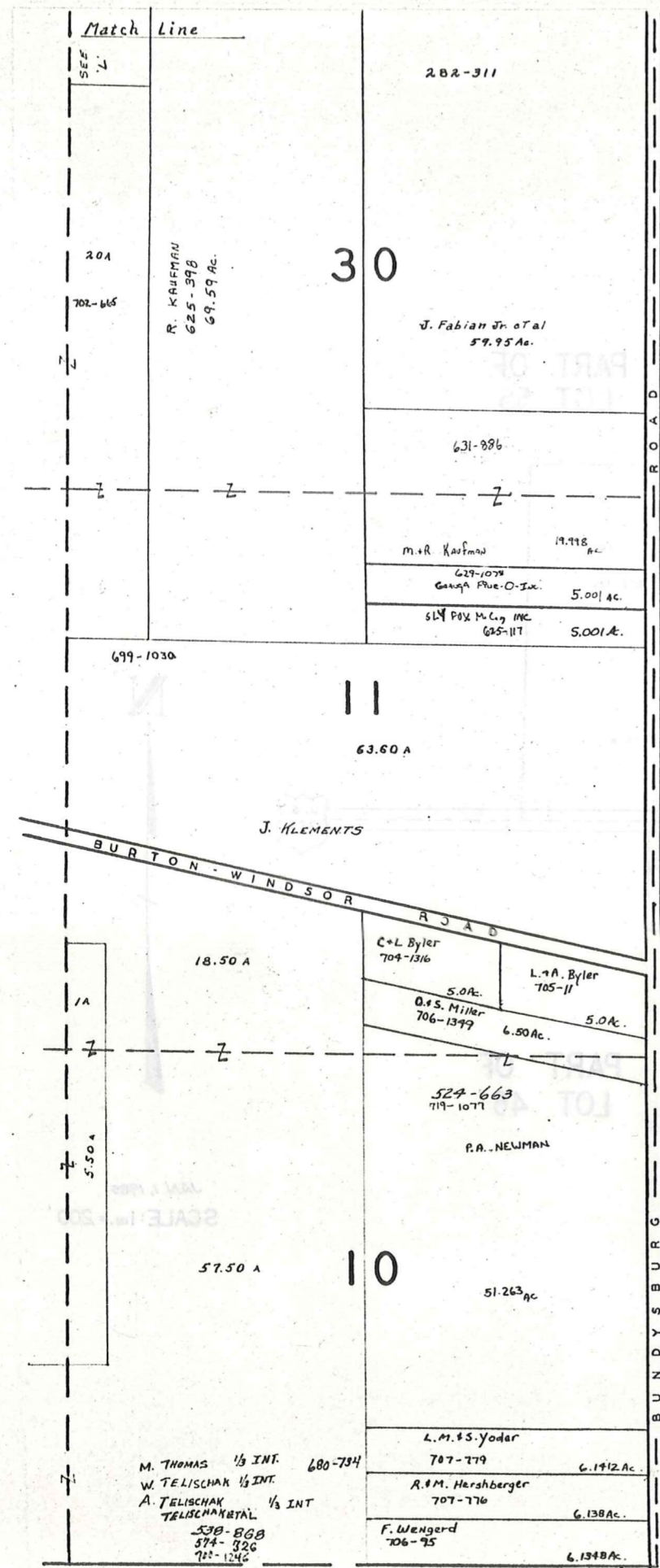
SEE PAGE P



SCALE 1" = 300'

A	B	C	D
E	F	G	H
I	J	K	L
M	N	O	P

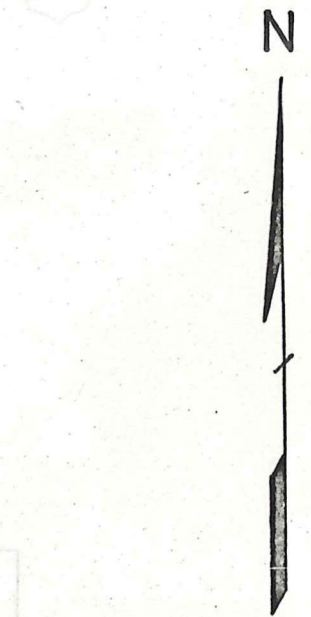
JAN. 1, 1985



ASHTABULA COUNTY

HUNTSBURG TWP.

MIDDLEFIELD TWP.



SCALE 1" = 300  
JAN 1, 1985

A	B	C	D
E	F	G	H
I	J	K	L
M	N	O	P 255

HUNTSBURG TWP.

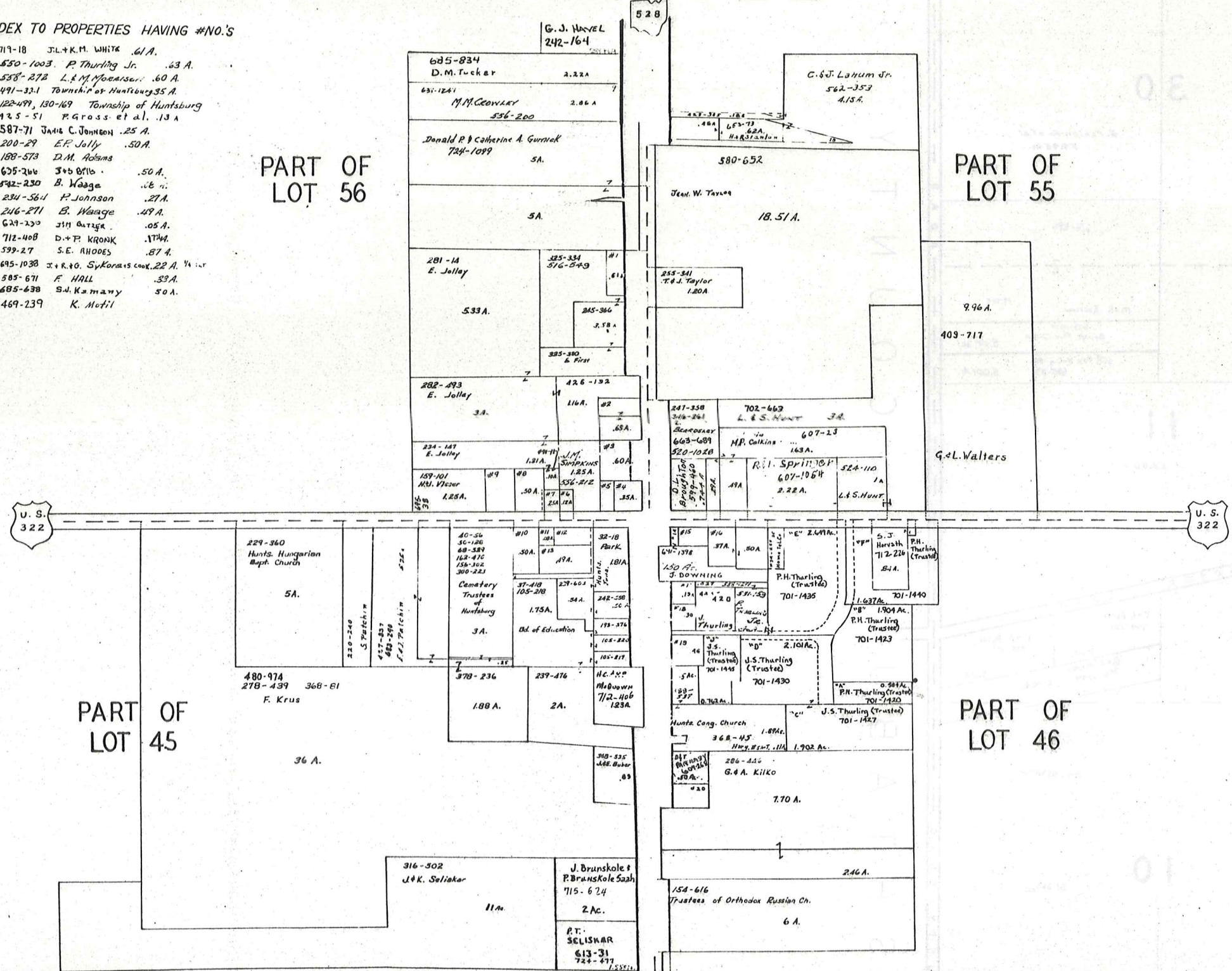
# HUNTSBURG TP. CENTER

## INDEX TO PROPERTIES HAVING #NO.'S

- #1 719-18 J.L. & K.M. WHITE .61 A.
- #2 550-1003 P. Thurling Jr. .63 A.
- #3 538-272 L. & M. Moeniser. 60 A.
- #4 491-331 Township of Huntsburg 35 A.
- #5 122-491, 130-169 Township of Huntsburg
- #6 125-51 P. Gross et al. 13 A.
- #7 587-71 James C. Johnson .25 A.
- #8 200-29 E.F. Jolly .50 A.
- #9 188-573 D.M. Adams
- #10 675-266 J & B O'Neil .50 A.
- #11 542-230 B. Waage .16 "
- #12 234-564 P. Johnson .27 A.
- #13 246-271 B. Waage .49 A.
- #14 629-250 J.M. Outage .05 A.
- #15 712-408 D. & F. KRONK .17 A.
- #16 599-27 S.E. RHODES .87 A.
- #17 695-1038 J. & R. Sykoras co. 22 A. 1/4 "
- #18 585-671 F. HALL .33 A.
- #19 685-638 S.W. Kamany 50 A.
- #20 469-239 K. Mofit

PART OF  
LOT 56

PART OF  
LOT 55



JAN. 1, 1985  
SCALE: 1 in. = 200'

# Explanation and Use Sheet for Geauga County, Ohio

SAMPLE (PARTIAL) COUNTY INDEX MAP



- Township Boundary
- Township Name
- Village Boundary
- Village Name
- Tract Lot Number
- Street Name
- Acreage
- Deed Book & Page
- Owners Name
- Denotes Continous Ownership

SAMPLE (PARTIAL) MAP PAGE



- Map Page Number
- Village Name
- Village Boundary
- Township Name

SAMPLE (PARTIAL) MUNICIPALITY INDEX MAP



- Street Name
- Village Name
- Township Name

## USE OF THE MAP VOLUME

1. LOCATE THE GENERAL AREA OF INTEREST ON THE COUNTY INDEX MAP, ATLAS PAGE 'B', AND NOTE THE MUNICIPALITY NAME (TOWNSHIP OR VILLAGE).
2. REFER TO THE TABLE OF CONTENTS, ATLAS PAGE 'C', AND NOTE THE BEGINNING ATLAS PAGE NUMBER FOR THE MUNICIPALITY OF INTEREST.
3. TURN TO THE PAGE INDICATED. ON THIS PAGE WILL APPEAR AN INDEX MAP FOR THAT MUNICIPALITY.
4. LOCATE THE GENERAL AREA OF INTEREST AND NOTE THE MAP PAGE NUMBER. THIS MAY BE EITHER A LETTER OR A NUMBER.
5. MAP PAGES ARE IN ALPHABETICAL (OR NUMERICAL) SEQUENCE FOLLOWING THE MUNICIPALITY INDEX MAP. FOLLOW SEQUENCE TO THE MAP PAGE INDICATED.
6. LOCATE SPECIFIC PARCEL OF INTEREST AND NOTE THE DESIRED INFORMATION.

NOTE: ON SOME MAPS YOU MAY BE REFERRED TO A DETAIL SHEET SHOWING AN ENLARGEMENT OF THE AREA. THESE MAPS ARE FOUND AT THE END OF THE REGULAR MAP PAGES IN EACH MUNICIPALITY IN EITHER ALPHABETICAL OR NUMERICAL SEQUENCE.

NOTE: CHARDON VILLAGE HAS TITLE SHEETS. TO LOCATE OWNERS NAME, NOTE THE PARCEL NUMBER, REFER TO THE TITLE PAGE FOLLOWING THE MAP OF INTEREST, FOLLOW NUMERICAL SEQUENCE TO THE PARCEL NUMBER OF INTEREST AND NOTE THE DESIRED INFORMATION. IN ALL OTHER MUNICIPALITIES THE OWNERS NAME APPEARS ON THE MAP PAGE.

This book is the property of REAL ESTATE DATA, INC. and is distributed by REDI under a leasing arrangement requiring return to REDI upon termination of the lease. REDI reserves the right to reclaim this book if found in the possession of any firm or person where possession was obtained through any unauthorized source.